



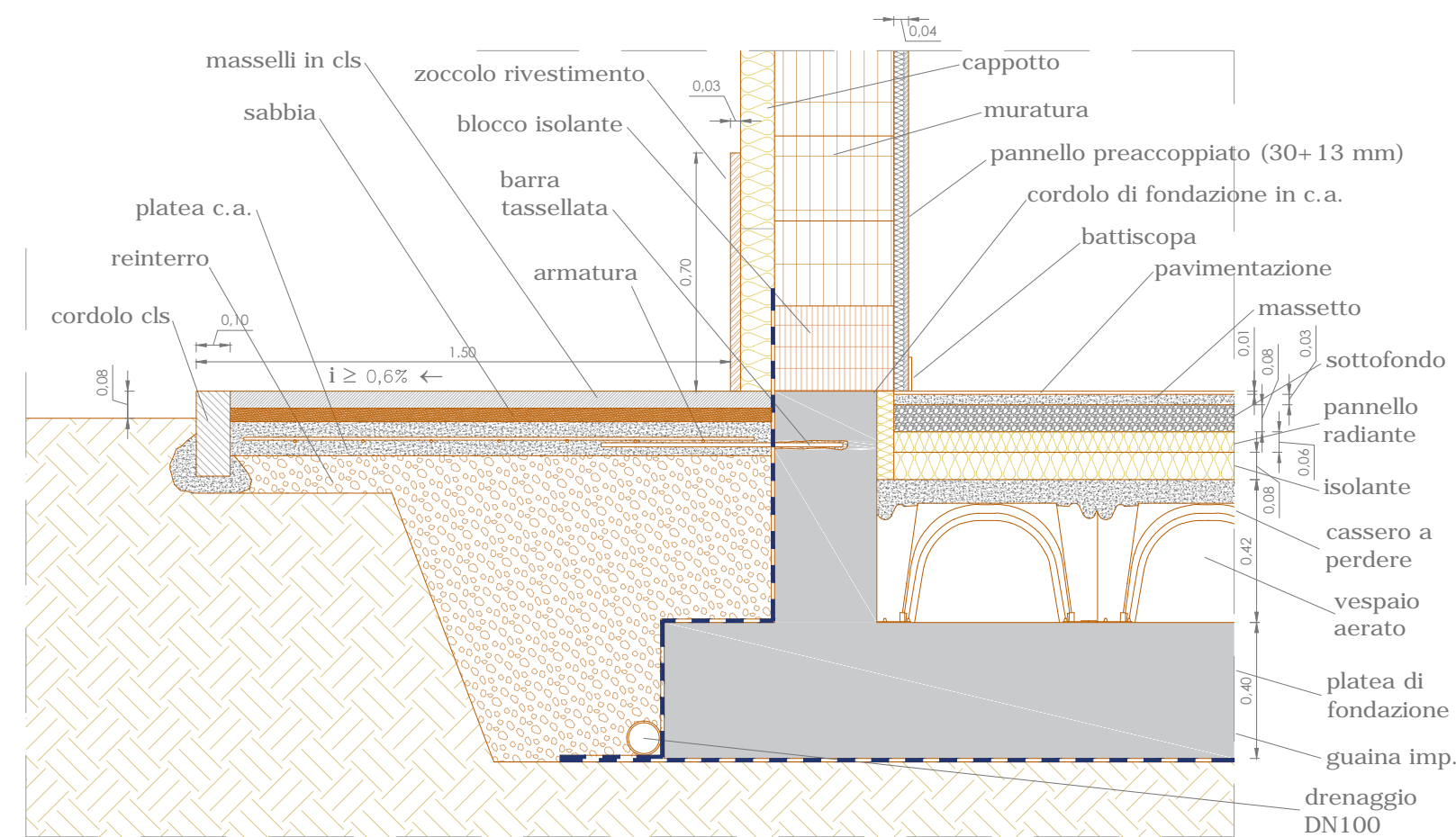
**Città di Castel Maggiore  
(Bologna)**

3° Settore LL.PP. e Ambiente  
Servizio Lavori Pubblici  
Tel.051/63.86.749 - Fax 051/63.86.800  
lavori\_publici@comune.castel-maggiore.bo.it  
comune.castelmaggiore@cert.provincia.bo.it

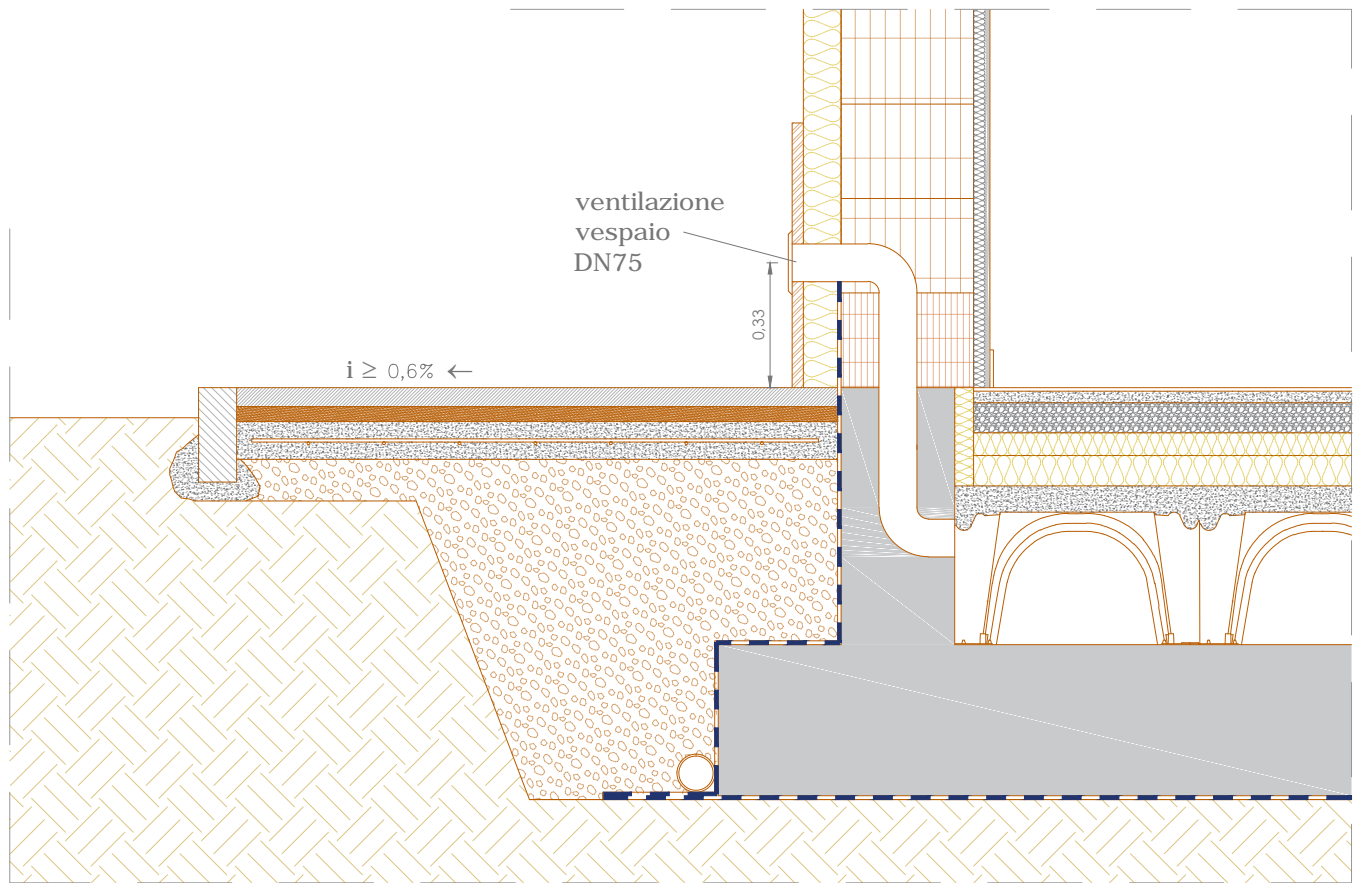
**PROGETTO ESECUTIVO  
REALIZZAZIONE POLO SICUREZZA  
IN VIA NERUDA - VIA UNGARETTI**

Progettista architettonico:	Masiello Ing. Nicola	Collaboratori:	Capone Ing. Carmine Calanca P.I.E. Simonetta Alboni P.A. Gilberto Tolomelli Ing. J. Claudio
Progettista e D.L. strutture:	Giovannini Ing. Paolo sgLab s.a.s. - Bologna	Collaboratori:	Dalmonte Ing. Cristian sgLab s.a.s. - Bologna
Progettista e D.L. imp. elettrici:	Rivizzigno P.I. Nicola studio Rivizzigno - Forlì		
Progettista e D.L. imp. meccanici:	Rivizzigno P.I. Nicola studio Rivizzigno - Forlì		
Coord. sicurezza progettazione:	Masiello Ing. Nicola		
RUP:	Campana Geom. Lucia		

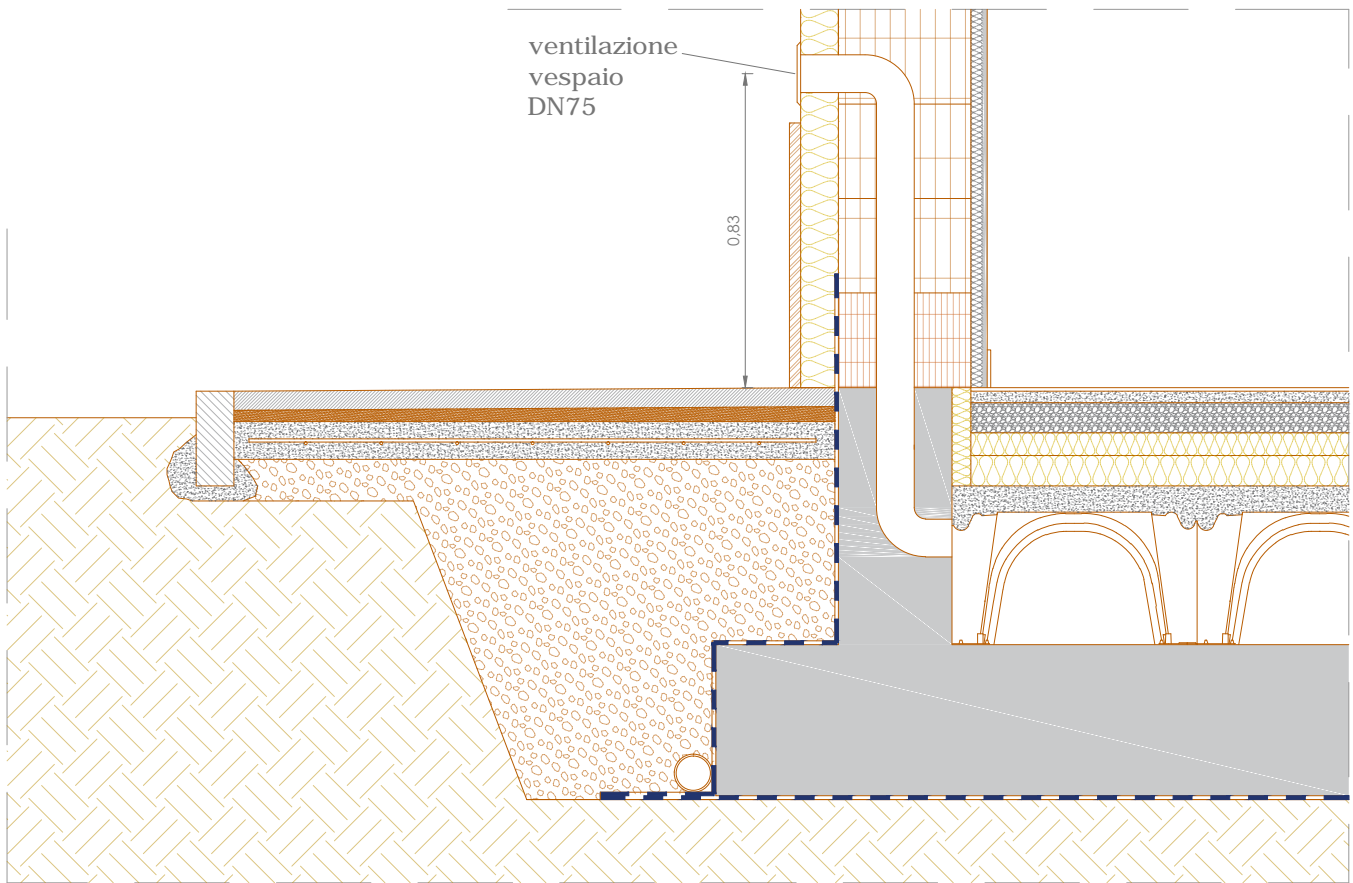
Oggetto:	<b>DETTAGLI ARCHITETTONICI</b>		
Scala:	1 : 20	Elaborato n.:	<b>A-09</b>
Data:	gennaio 2017		



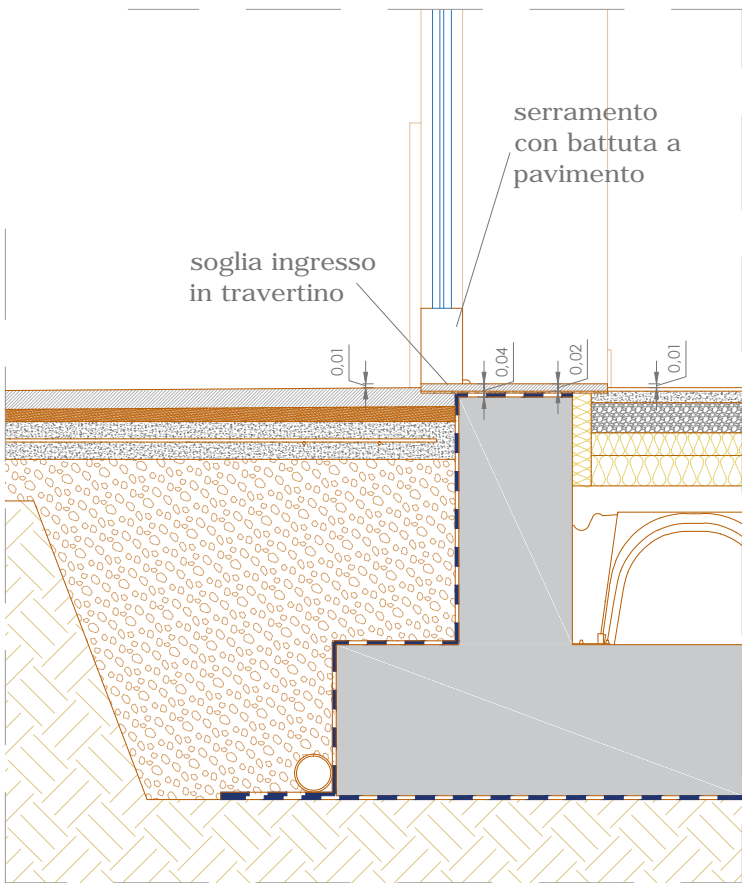
14.PIANO TERRA



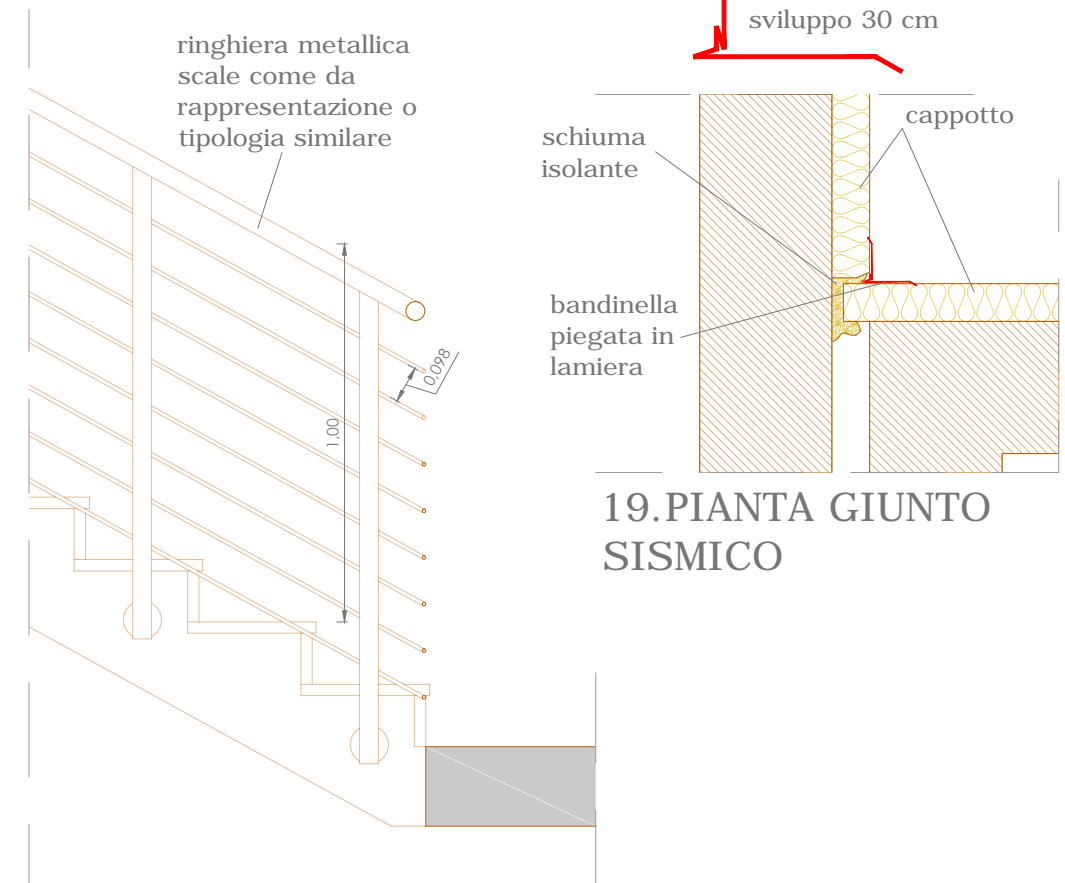
15.PIANO TERRA AERAZIONE FACCIE NORD



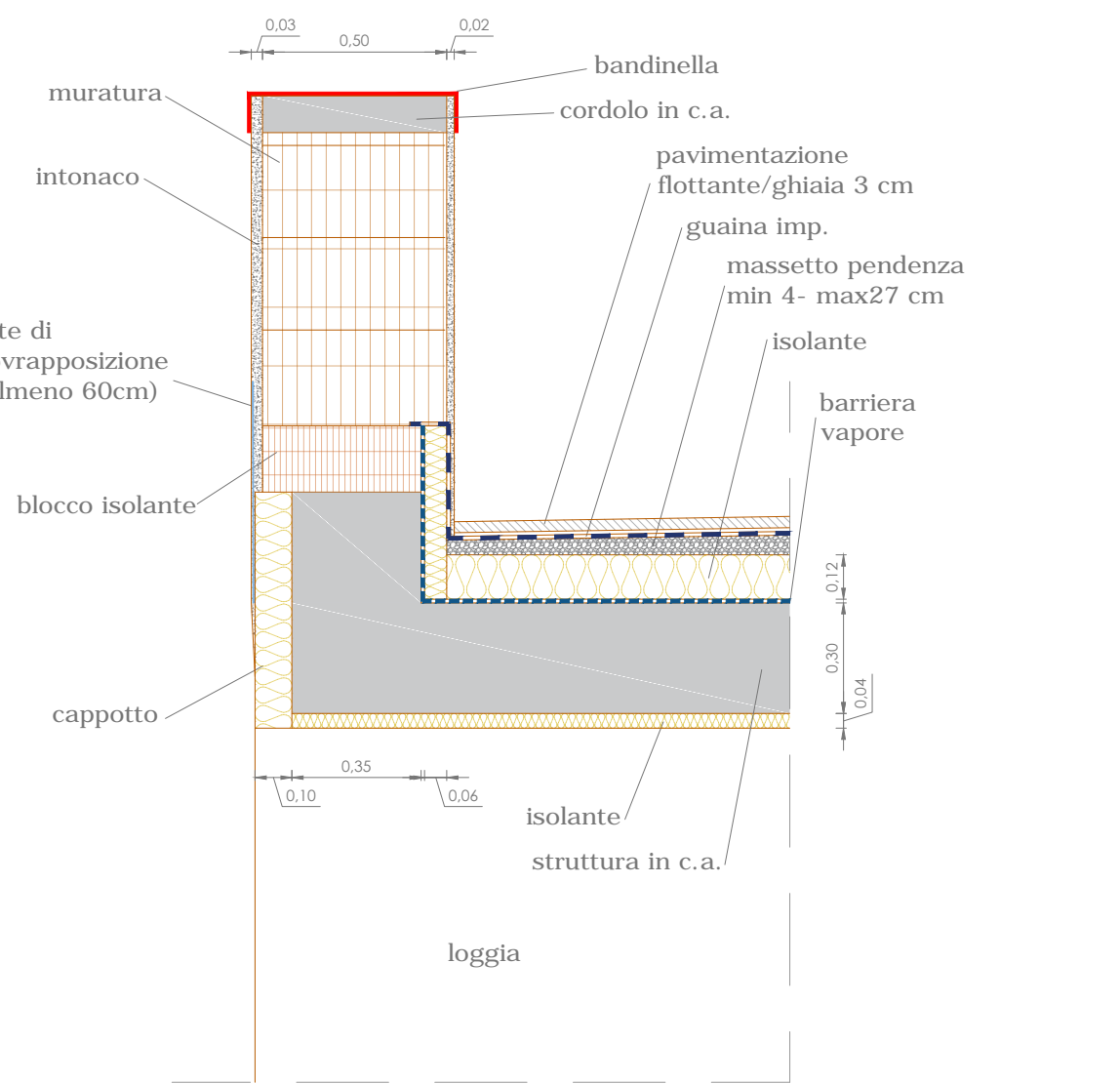
16.PIANO TERRA AERAZIONE FACCIE SUD



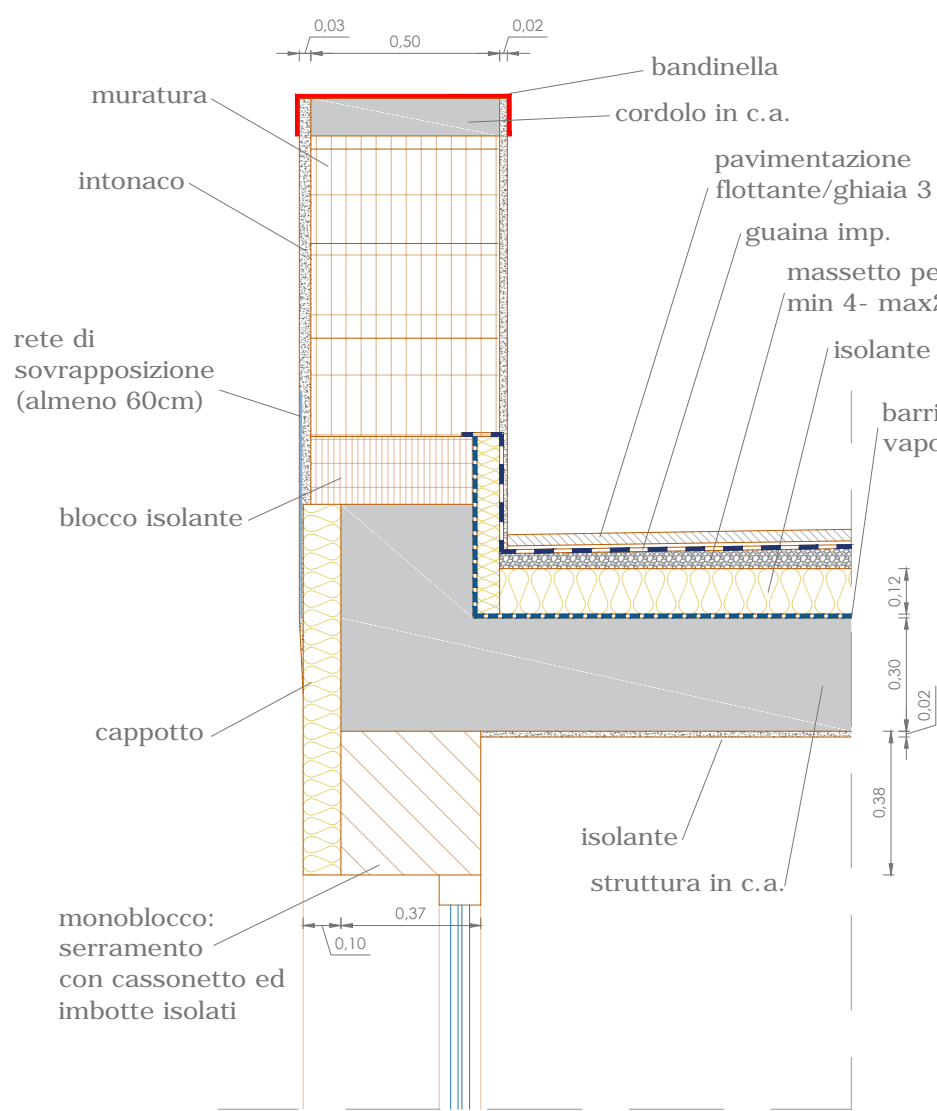
17.PIANO TERRA SOGLIA INGRESSO



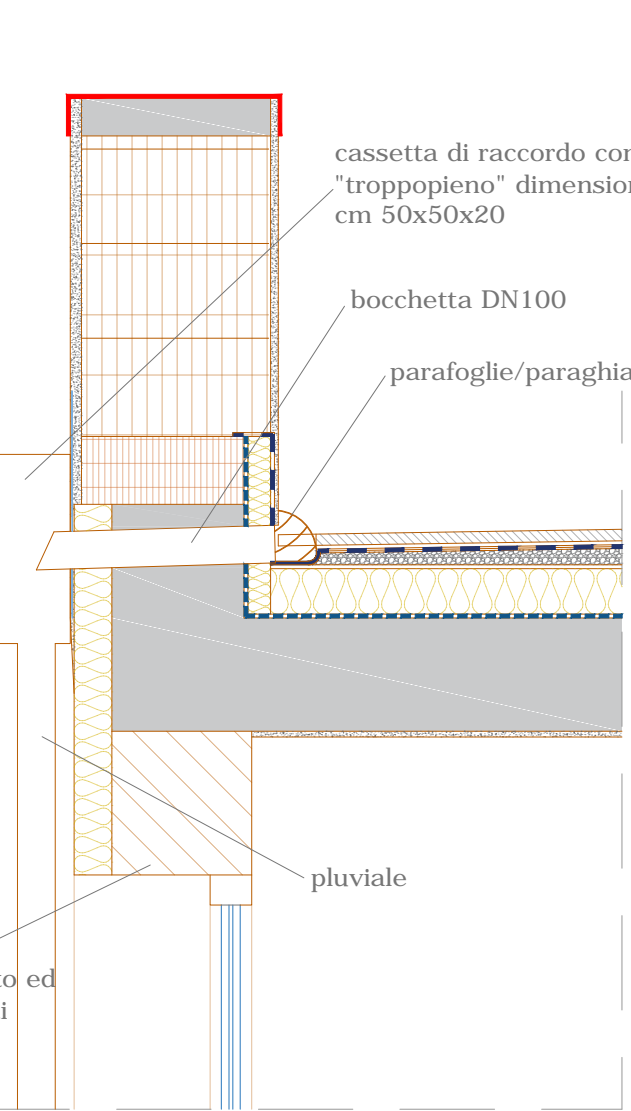
18.DETTAGLIO RAMPA SCALE



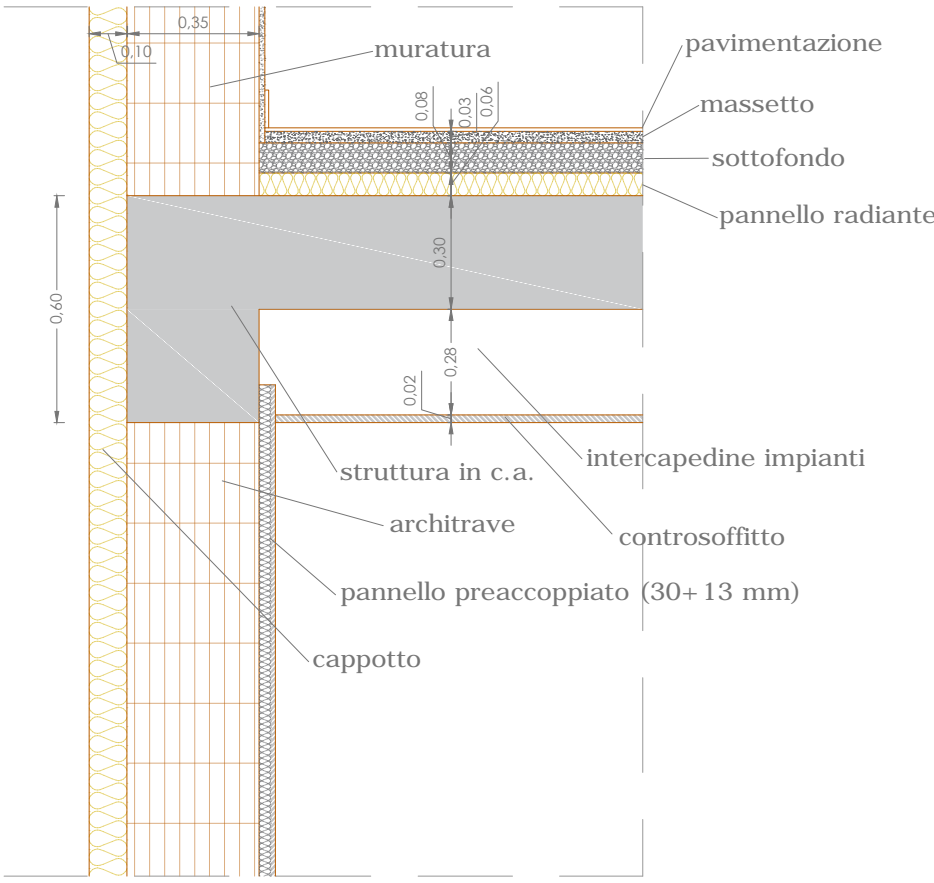
01.COPERTURA (LOGGIA)



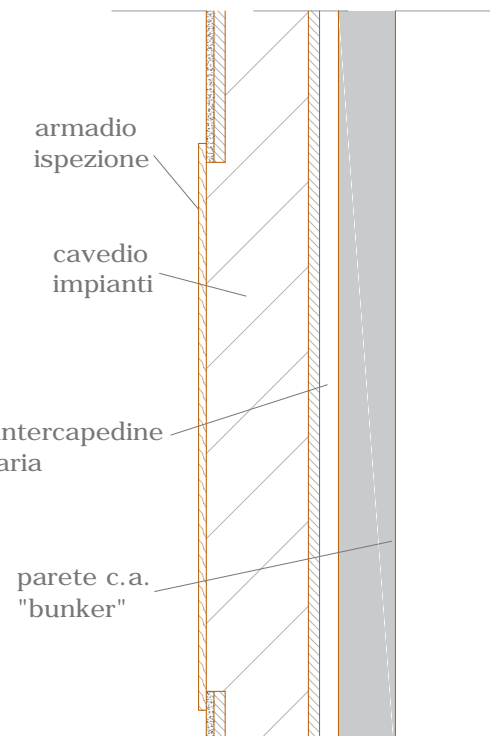
02.COPERTURA (INTERNO)



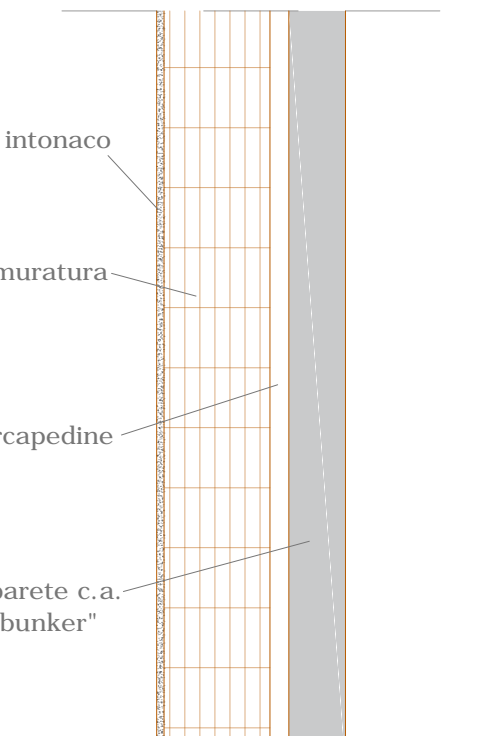
03.COPERTURA (DETTAGLIO SCARICO)



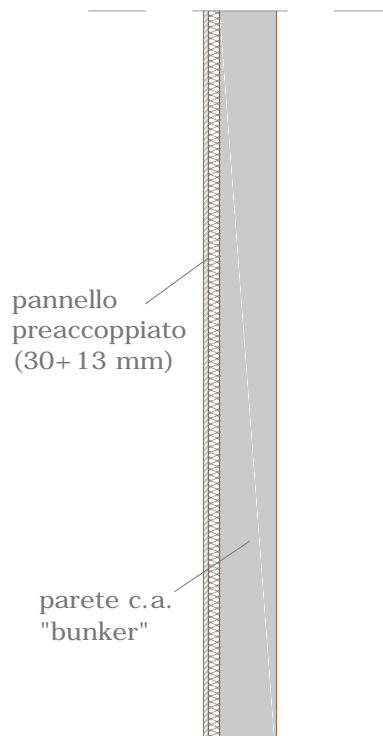
09.PIANO TERRA - PIANO PRIMO



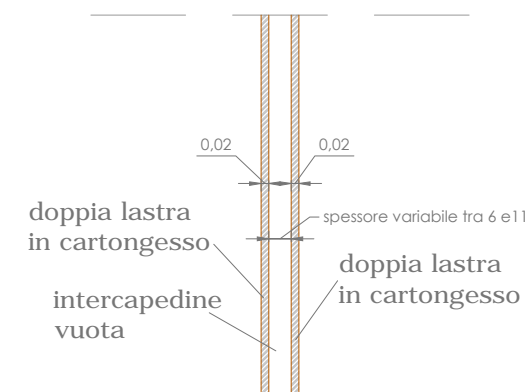
10.PARETI LOCALI MASSIMA SICUREZZA VERSO VANO SCALE



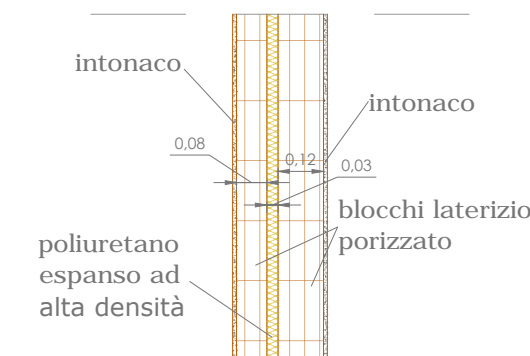
11.PARETI LOCALI MASSIMA SICUREZZA VERSO VANO SCALE



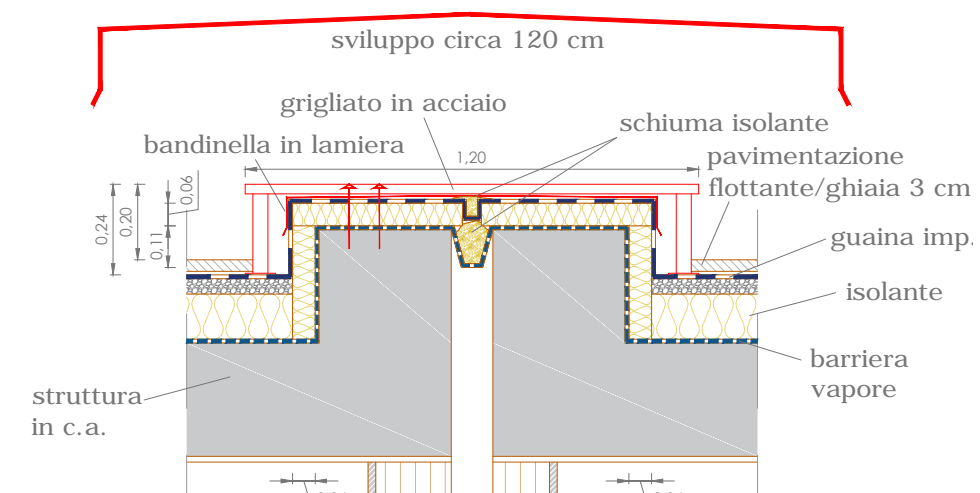
12.PARETI LOCALI MASSIMA SICUREZZA



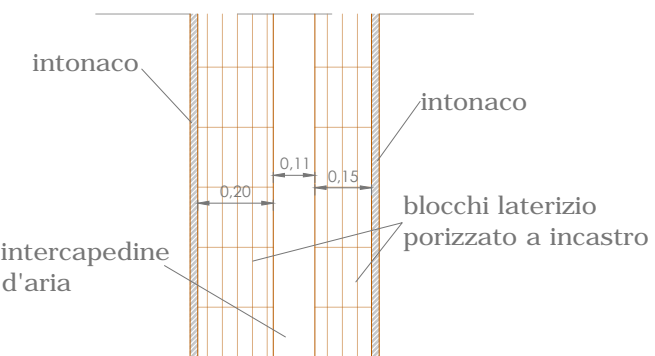
04.DIVISORI INTERNI



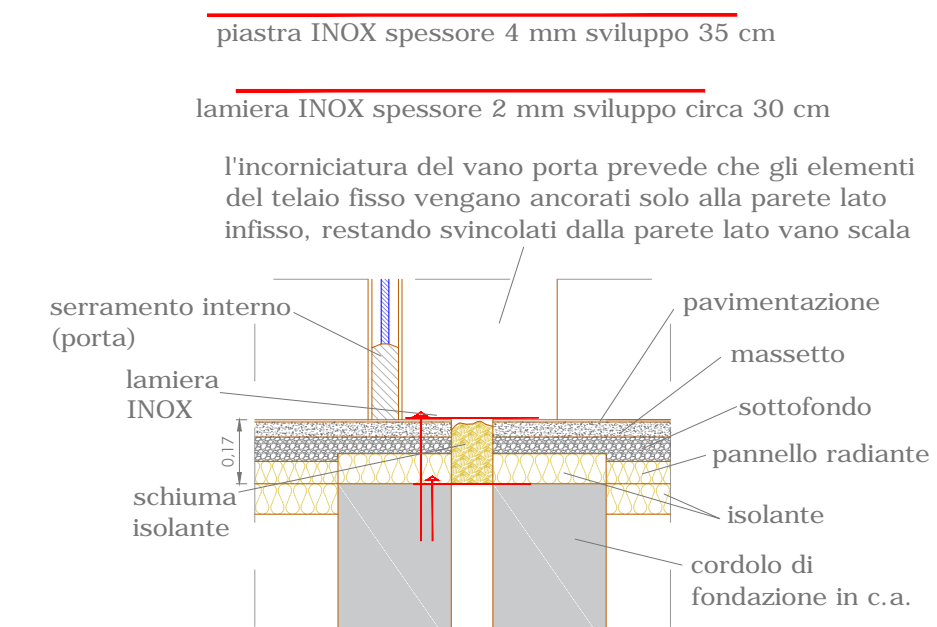
05.DIVISORI TRA APPARTAMENTI



06.GIUNTO SISMICO IN COPERTURA



07.GIUNTO SISMICO SEZIONE VERTICALE



13.GIUNTO SISMICO IN CORRISPONDENZA DI APERTURA AL PIANO TERRA

