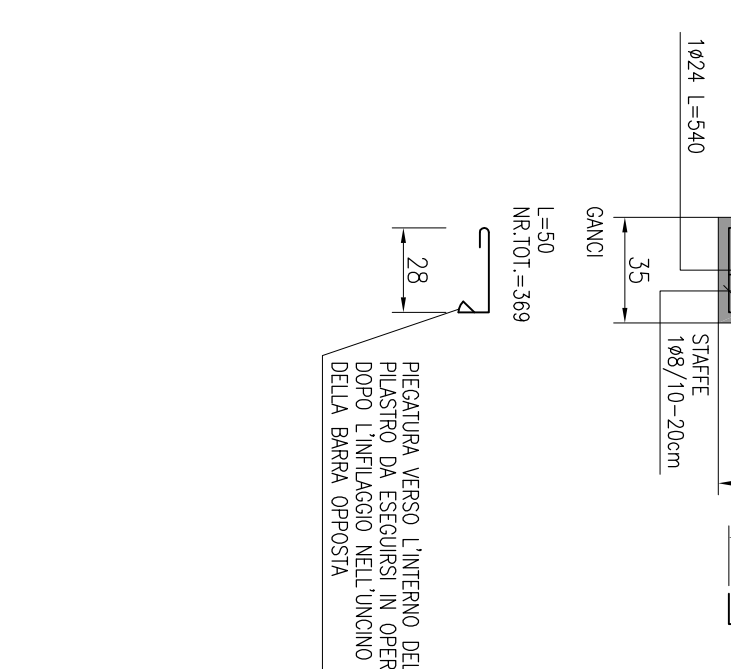
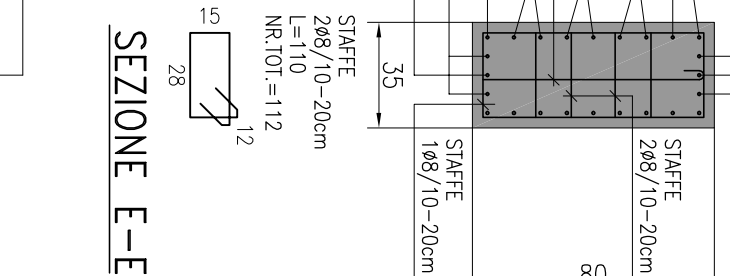
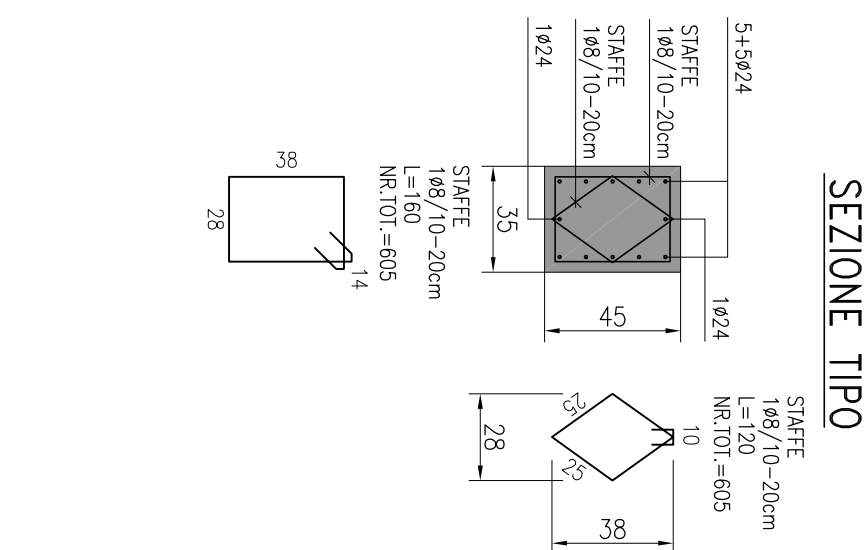
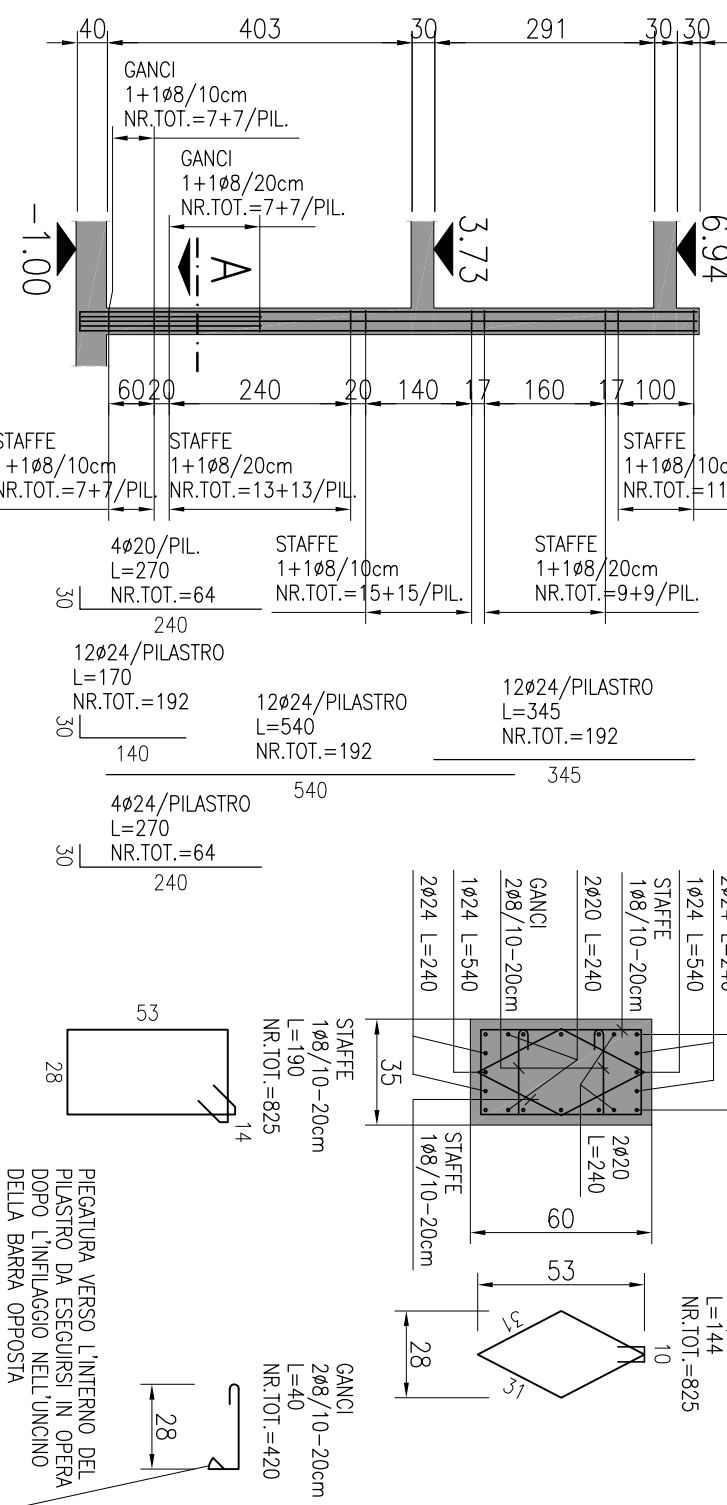


 $\gamma_k = 450 \text{ N/mm}^2 = 4,500 \text{ kg/cm}^2$
 $\gamma_l = 540 \text{ N/mm}^2 = 5,400 \text{ kg/cm}^2$

50	kg/m ³
130	kg/m ³

30	kg/m ²
50	kg/m ²

100	kg/m ³
400	kg/m ³

[illegible]