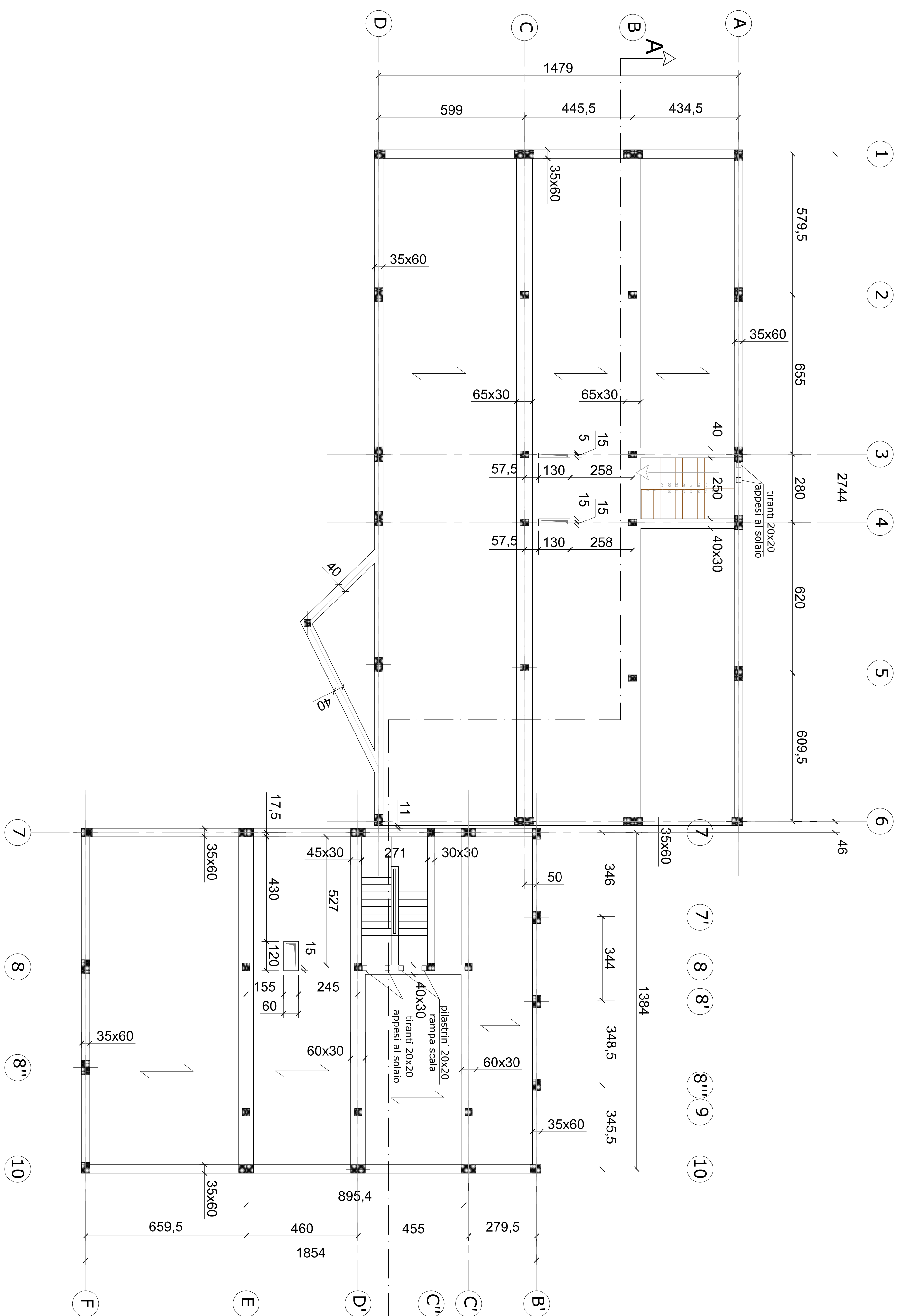
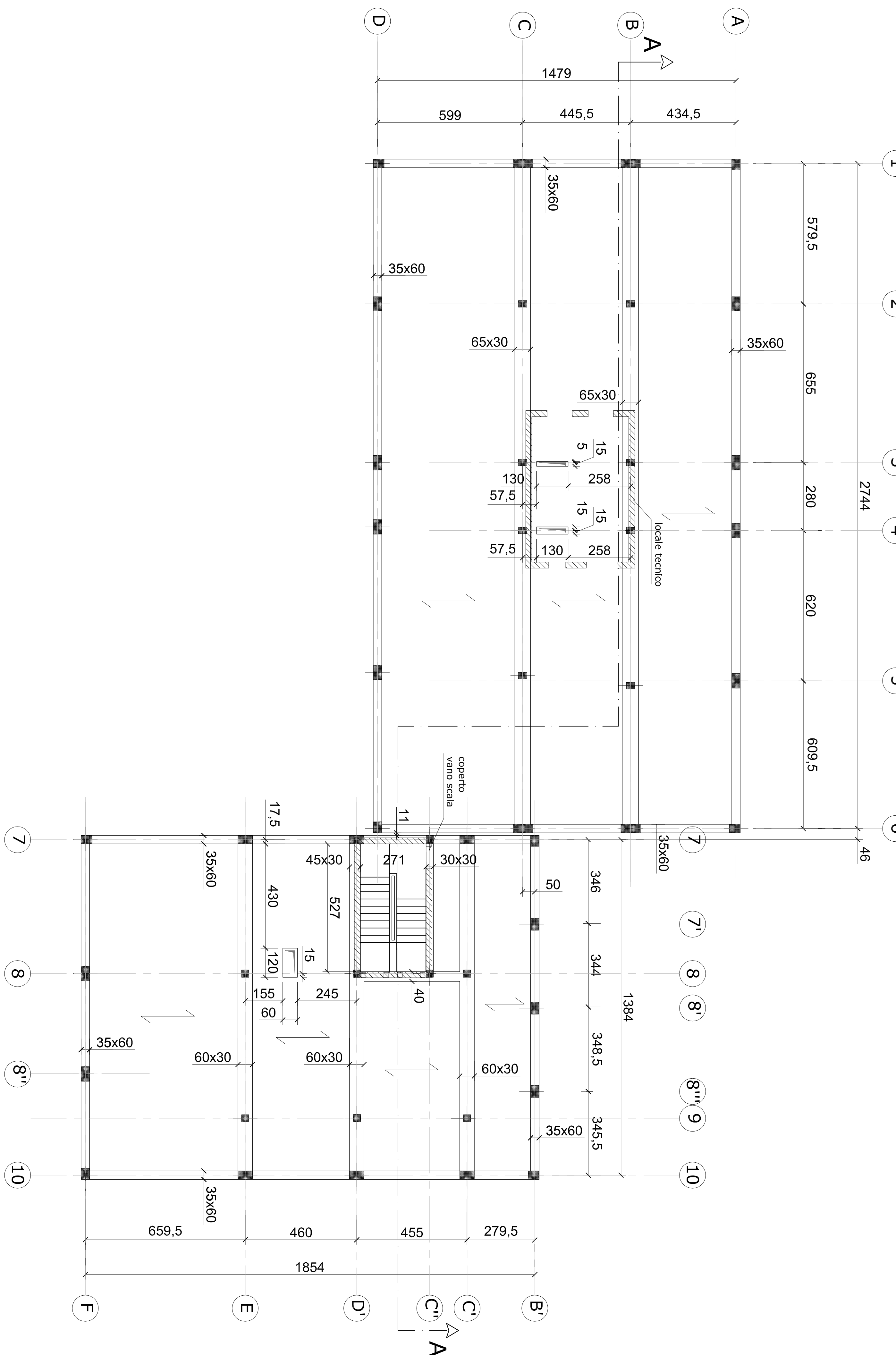


Pianta piano primo - scala 1:100



Pianta piano copertura - scala 1:100



Sezione A - scala 1:100

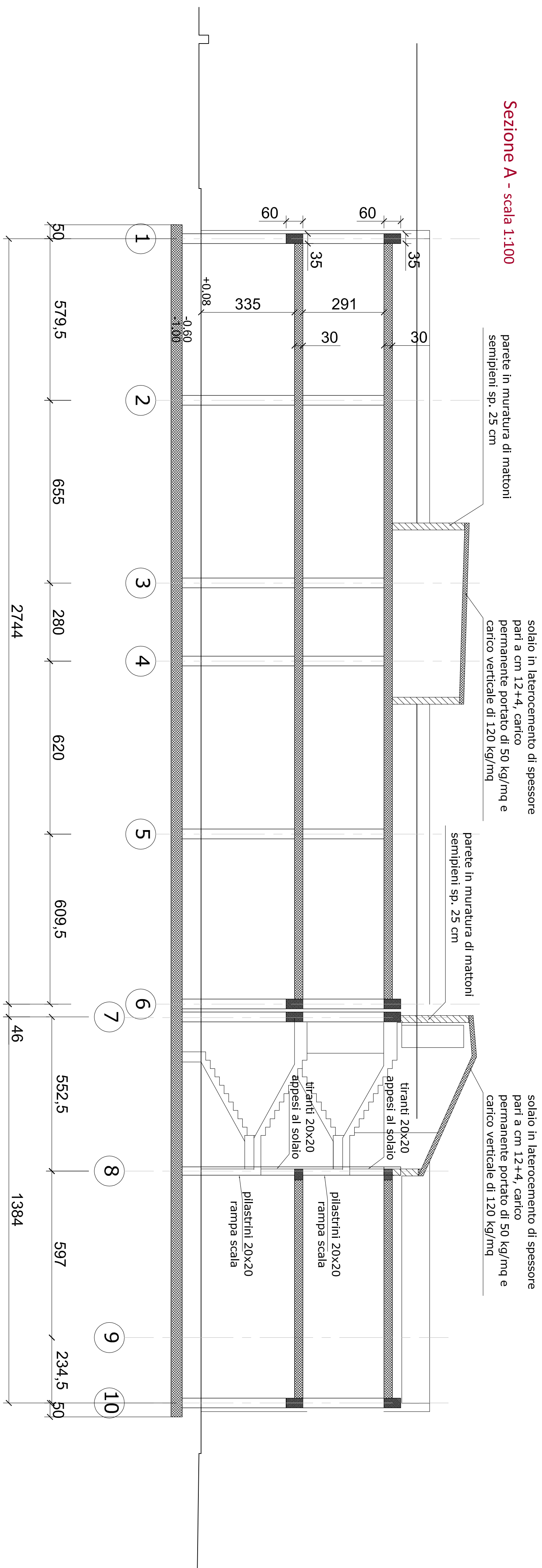
[illegible][illegible]

Figure 1 consists of two technical drawings, (a) and (b), illustrating the details of the connection between a steel beam and a concrete slab.

(a) ELEVATION: This drawing shows a cross-section of the connection. The steel beam is labeled "I.N.O. 200x300". The concrete slab is labeled "CONCRETO". The connection is labeled "CONEXÃO". The dimensions are: 100 mm for the gap between the beam and the slab, 100 mm for the reinforcement, and 100 mm for the concrete. The beam is 100 mm wide and 300 mm high. The slab is 100 mm thick. The connection is 100 mm wide and 300 mm high.

(b) PLANO: This drawing shows a plan view of the connection. The steel beam is labeled "I.N.O. 200x300". The concrete slab is labeled "CONCRETO". The connection is labeled "CONEXÃO". The dimensions are: 100 mm for the gap between the beam and the slab, 100 mm for the reinforcement, and 100 mm for the concrete. The beam is 100 mm wide and 300 mm high. The slab is 100 mm thick. The connection is 100 mm wide and 300 mm high.

		Città di Castel Maggiore (Bologna) 3° Settore LL.PP. e Ambiente Servizio Lavori Pubblici Via dell'Industria, 10 - 40060 Imerti (Bologna) - Tel. 051/65.86.000 E-mail: pubblici@comune.castel-maggiore.bo.it Internet: www.comune.castel-maggiore.bo.it
PROGETTO ESECUTIVO		
REALIZZAZIONE POLO SICUREZZA IN VIA NERUDA - VIA UNGARETTI		
Progettazione e realizzazione:	Studio Ing. Neriola	Collaboratori:
Progettista e D.L. autorizz.	Esponenti Ing. Paolo Bolognini e Ing. Stefano Bolognini	Collaboratori:
Progettista e D.L. imp. decreti:	Roberto Ing. Massimo L.	Collaboratori:
Progettista e D.L. imp. decreti e incarico Direzione Provinciale	Roberto Ing. Michele Bolognini e Ing. Michele Bolognini	Collaboratori:
Co-progettazione progettazione:	Studio Ing. Neriola	
Co-progettazione:	Gruppo Geom. Lodi	
Disegni:		
CASSERI TRAVI E SOLAI		
Scala: 1:100		Riduzione:
Data: gennaio 2017		
Revisione: 02		
ST-004		